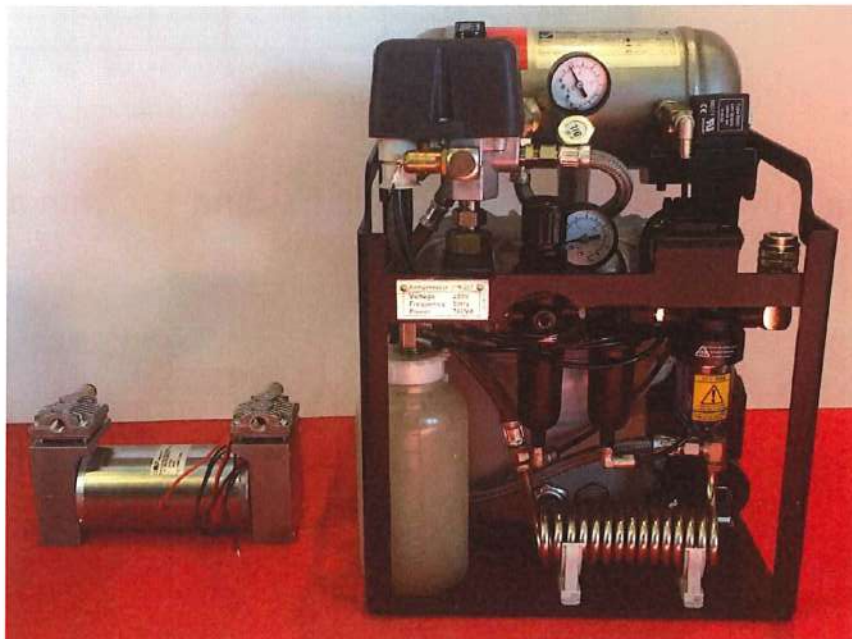


Dear partners,

I receive more and more frequently the question why does EMS continue to use external compressors for their Swiss DolorClast family. Indeed, all our competitors have at least one product in their portfolio with an internal pump.

This is based on the fact that not a single Randomized Controlled Trial (RCT) has been conducted with a Radial ESWT device using an internal pump.

Even more, when some of our competitors are running Randomized Controlled Trials, they always used their devices with external compressors, never the ones with internal pumps. There must be a reason behind that...



The reason is physical. These small and light pumps delivers a weak air flow providing a limited energy output.

For the time being, all the clinical trials we have conducted with these internal pumps have limited the treatment outcomes and we do not want any compromise on your results.

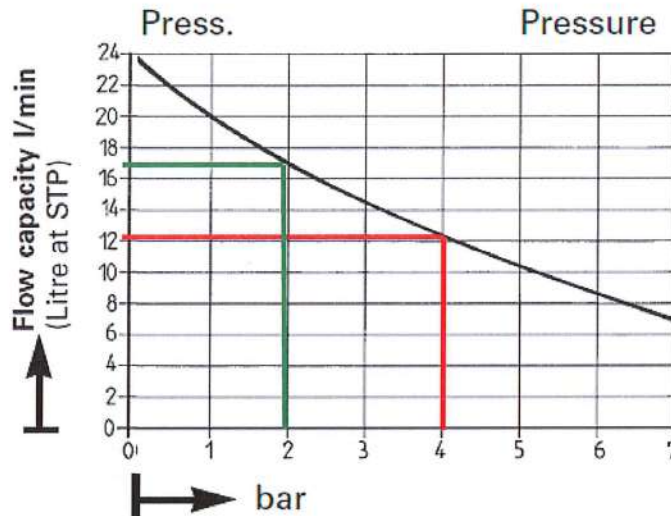
Best regards,

J.-C. Prandi
Product Manager Shock Waves

**"I FEEL
GOOD"**

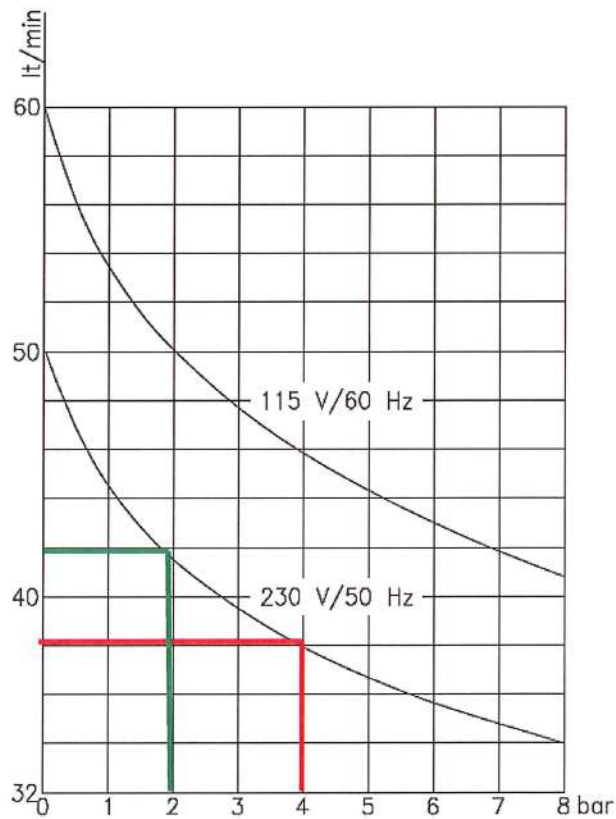
HIGHER FLOW = HIGHER ENERGY = BETTER OUTCOMES

Internal Pump
KNF - NPK09
2 Heads



The Internal Pump delivers **17L/min at 2 bar** and **12L/min at 4 bar**

External Compressor
Werther AA100
Air tank



The External Compressor delivers **42L/min at 2 bar** & **38L/min at 4 bar!**